



# Silk Screen Inks

## Products Information

[www.sabinecolors.com](http://www.sabinecolors.com)



### TRL85L

### Inkjet Light Cut out Transfer Paper

1/3

#### 1. Application

This product is recommended with wax crayons, Oil pastels, fluorescent markers, color pencil, Mild solvent ink, Eco-solvent ink, sublimation ink, Water based pigment or Dye inkjet ink for white or Light-colored T-shirts, aprons, gift bags, mouse pads, photographs on quilts etc. The transfer peels off easily after it cools or with hot and can be applied with a regular household iron or professional heat press machine.

#### 2. Advantage

- \* Customize Fabric with favorite photos and color graphics
- \* Designed for vivid results on white or light-colored cotton or cotton/polyester blend fabrics
- \* Ideal for personalizing T-shirts, canvas bags, wool garment, aprons, gift bags, mouse pads, photographs on quilts etc.
- \* Transfer peels off easily with hot (**matte finish**) or after cooling (**glossy finish**)
- \* Iron on with a regular household iron & Heat Transfer Press machines

#### 3. Compatibility for Light inkjet Transfers

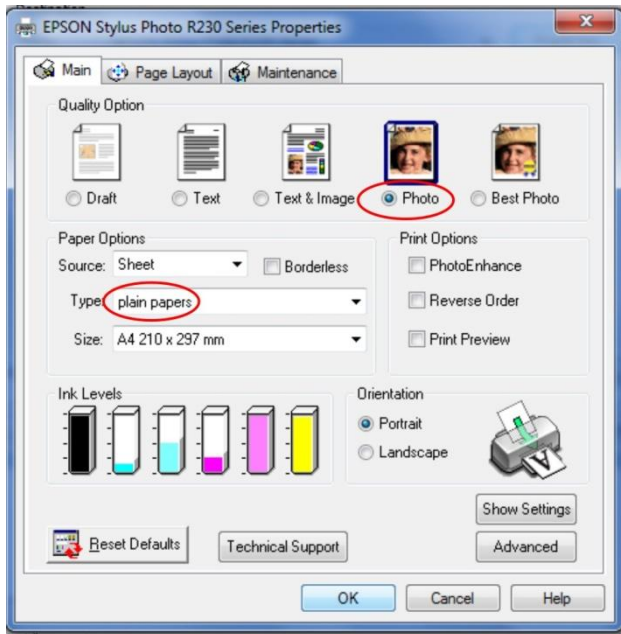
It can be printed with water based inks in most printers such as:  
Epson Stylus Photo 1390, R270, R230, PRO 4400,

#### 4. Printer Recommendations

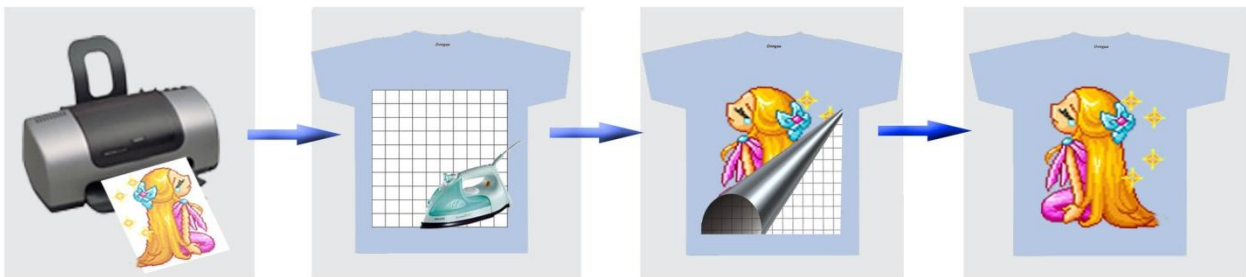
- 1) Store TRL85L in its original packaging in a cool, dry place.
- 2) Only print onto the unprinted, coated side of transfer paper, select normal mode and **mirror** mode on your printer.
- 3) Printer settings: **normal paper** mode using **photo quality** print quality
- 4) Before transferring, leave the printed image to dry for approx 15 minutes, more dry more better to wash, cut out the motif without leaving a margin around the edges, Straight after peel off the transfer film from the paper back.
- 5) First print the desired motif onto standard paper to check that the color and size are correct.
- 6) Compatibility: It is designed to work with special Sabinecolors pigment ink.

Dora Highway facing Arab Bank, Jirair Kaprielian Bld. 1<sup>st</sup> Tel. +961-1-259215 Mobile +961-3-388326  
Beirut - Lebanon

[www.sabinecolors.com](http://www.sabinecolors.com) e-mail: [sabinecolor@yahoo.com](mailto:sabinecolor@yahoo.com)



## 5. Iron-on Transfer Processing



- A. Prepare a stable, heat-resistant surface suitable for ironing on.
- B. Preheat the iron to the highest setting, recommended ironing temperature 200°C.
- C. Briefly iron the fabric to ensure that it is completely smooth.
- D. Before transferring, leave the printed image to dry for approx 15 minutes, more dry more better to wash, cut out the motif without leaving a margin around the edges, Straight after peel off the transfer film from the paper back.
- E. Place the transfer paper onto it with the printed image facing downwards.
- F. Do not use the steam function. Make sure that the heat is evenly transferred over the entire area. Iron the transfer paper, applying as much pressure as possible. When moving the iron, less pressure should be given. Don't forget the corners and edges.
- G. Continue ironing until you have completely traced the sides of the image. This entire process should take about 60-70 seconds for an 8"x 10" image surface.
- H. Peel off the back paper starting at the corner after the ironing process.
- I. You can get glossy finish with cold peel and matte finish with hot peel.

## 6. Heat press machine Transfer processing.

- a. Set heat press machine at 185°C, for 15--25 second using high pressure.
- b. Briefly heat the fabric for 10 second to ensure that it is completely smooth.
- c. Before transferring, leave the printed image to dry for approx 15 minutes, more dry more better to wash, cut out the motif without leaving a margin around the edges, Straight after peel off the transfer film from the paper back.
- d. Place transfer paper onto fabric with the printed image facing downwards.
- e. heat press machine at 185°C, for 15--25 second.
- f. Peel off the back paper starting at the corner.

## 7. Washing Instructions

- 1) waiting 24 hours before washing for the first time(drying time)
- 2) Fabrics bearing our transfers are machine-washable up to 30°C, always wash garments inside out.
- 3) Do not use aggressive washing detergents or bleach of any kind
- 4) Do not tumble-dry
- 5) Iron only on the reverse side.

## 8. Material Storage

conditions of 35-65% Relative Humidity and at a temperature of 10-30°C.