



Silk Screen Inks

Products Information

www.sabinecolors.com

TRL87

Light InkJet Heat Transfer Paper

Product: Light inkjet Transfer Paper (hot peel)

Description: with inkjet, a single step to make transfer for light colored fabrics, inks recommended pigment special Sabinecolors inks.

1/2



1. Application

This product is recommended with wax crayons, Oil pastels, fluorescent markers, color pencil, Mild solvent ink, Eco-solvent ink, Water based pigment or Dye inkjet ink (**NOT recommend to use sublimation ink**) for white or Light-colored T-shirts, aprons, gift bags, mouse pads, photographs on quilts etc. The transfer peels off with hot and can be applied with a regular household iron or professional heat press machine.

2. Advantage

- * Customize Fabric with favorite photos and color graphics
- * Designed for vivid results on white or light-colored cotton or cotton/polyester blend fabrics
- * Ideal for personalizing T-shirts, canvas bags, wool garment, aprons, gift bags, mouse pads, photographs, 100% cotton, 100% polyester, polyester/cotton, polyester/acrylic blend, nylon/Spandex blend, artificial leather
- * Transfer peels off easily with hot.
- * Iron on with a regular household iron & Heat Transfer Press machines

3. Compatibility for Light inkjet Transfers

It can be printed with special Sabinecolors inks in most printers such as: Epson Stylus Photo 1390, R270, R230,

4. Printer Recommendations

- 1) Store TRL80LJ in its original packaging in a cool, dry place.
- 2) Only print onto the unprinted, coated side of transfer paper, select normal mode and **mirror** mode on your printer.
- 3) Printer settings: **normal paper** mode using **photo quality** print quality
- 4) Before transferring, leave the printed image to dry for approx 15 minutes, cut out the motif without leaving a margin around the edges. Straight after peel off the transfer film from the paper back.
- 5) First print the desired motif onto standard paper to check that the color and size are correct..
- 6) Compatibility: It is designed to work with water based Dye & pigment ink.

1. Easy Application

2. High ink absorbency

3. Soft Touch

4. The back paper can be peel off easily within 3seconds and can be applied with a regular household iron or heat press machine.

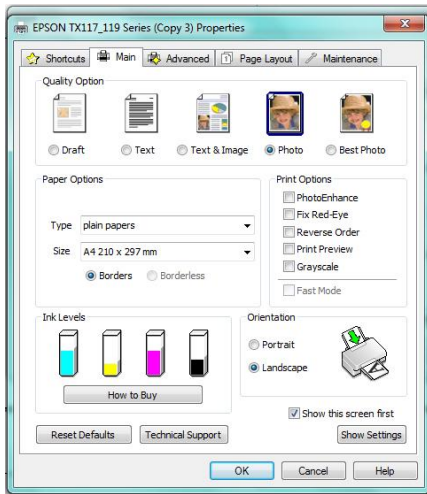
5. Good washability (wash in washing machine for more than 80Times)

6. Suitable for laser printers and ink-jet printers.

7. More flexible and more elastic

Dora Highway facing Arab Bank, Jirair Kaprielian Bld. 1st Tel. +961-1-259215 Mobile +961-3-388326
Beirut - Lebanon

www.sabinecolors.com e-mail: sabinecolor@yahoo.com

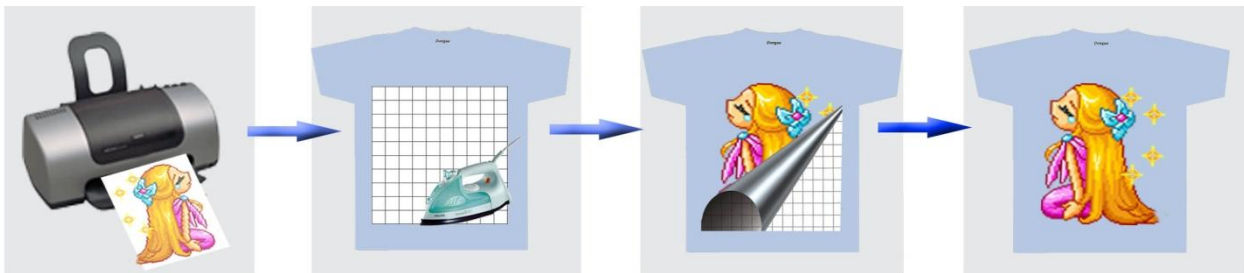


- A. Prepare a stable, heat-resistant surface suitable for ironing on.
- B. Preheat the iron to the highest setting recommended ironing temperature 200°C.
- C. Before transferring, leave the printed image to dry for approx 15 minutes, cut out the motif without leaving a margin around the edges.
- D. Briefly iron the fabric to ensure that it is completely smooth, and then place the transfer paper onto it with the printed image facing downwards.
- E. Do not use the steam function. Make sure that the heat is evenly transferred over the entire area. Iron the transfer paper, applying as much pressure as possible. When moving the iron, less pressure should be given. Don't forget the corners and edges.
- F. Continue ironing until you have completely traced the sides of the image. This

entire process should take about 60-70 seconds for an 8"x 10" image surface. Follow-up by ironing the whole image quickly, heating all of the transfer paper again for approximately 10-13 seconds.

G. Peel the transfer starting at the corner with **hot**.

5. Iron-on Transfer Processing



6. Heat press machine Transfer processing.

- A. Set heat press machine at 185°C, for 20 second using high pressure.
- B. Briefly heat the fabric for 5 second to ensure that it is completely smooth.
- C. Before transferring, leave the printed image to dry for approx 15 minutes, cut out the motif without leaving a margin around the edges.
- D. Place transfer paper onto fabric with the printed image facing downwards.
- E. heat press machine at 185°C, for 20 second.
- F. Peel off the back paper starting at the corner with hot.

7. Washing Instructions

- 1) waiting 24 hours before washing for the first time (drying time)
- 2) Fabrics bearing our transfers are machine-washable up to 30°C, always wash garments inside out.
- 3) Do not use aggressive washing detergents or bleach of any kind
- 4) Do not tumble-dry
- 5) Iron only on the reverse side. .

8. Material Storage

conditions of 35-65% Relative Humidity and at a temperature of 10-30°C.